

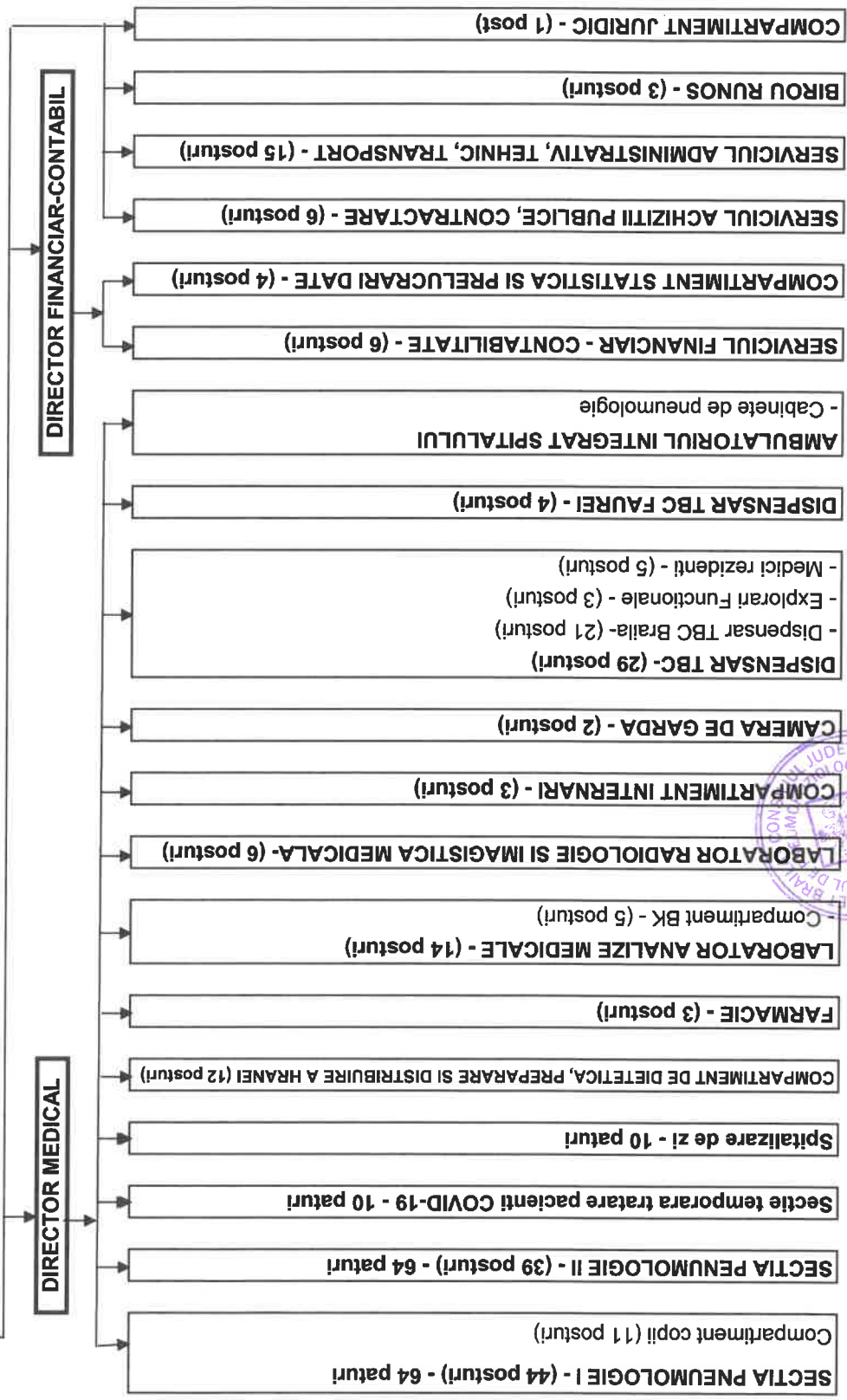
152 Paturi - spitalizare continua (din care 10 paturi Covid)
 10 Paturi - spitalizare de zi
 201 posturi

CONSILIUL JUDETEAN BRAILA
SPITALUL DE PNEUMOFIZIOLOGIE
 Str. R.S. Campului Nr. 21, Braila, 810003,
 Tel: 0239 613 665; Fax: 0239 613 113
 www.spitalulbbr.ro
 sptalibcbraile@yahoo.com

ANMCS
 unicaie afiliata in
 PROCES DE ACREDITARE
 CICLUL al II-lea

MANAGER ↔ CONSILIUL DE ADMINISTRATIE

SERVIUL DE MANAGEMENT AL CALITATII SERVICIILOR DE SANATATE - (7 posturi)
 - Compartiment CPIAAM (3 posturi)



Anexa nr.1 la
 Hotărârea nr.21/
 2023

Manager
 Ec. Sîmpetru Stefan



CONSILIUL JUDETEAN BRAILA
SPITALUL DE PNEUMOFTIZIOLOGIE

Str. R.S. Campiniu Nr. 21, Braila, 810003,
Tel: 0239 613 665; Fax: 0239 613 113
www.spitalultbcbro
spitaltbcbraila@yahoo.com



unitate aflată în
PROCES DE ACREDITARE
CICLUL al II-lea



152 Paturi- Spitalizare continua
10 Paturi- Spitalizare de zi

**STAT DE FUNCTIUNI LA
DATA DE**

07.02.2023

CONDUCERE				Lege-Cadru 153/2017		
Nr Crt.	Denumirea functiei	Grad profesional	Studii	Grad	Post	Observatii
1	Manager		S	II	1.0	
2	Director financiar-contabil		S	II	1.0	
3	Director medical		S	II	1.0	

Total CONDUCERE **3.0**

**SECTII MEDICALE
SPITAL**

SECTIA PNEUMOLOGIE I (64 PATURI)				Lege-Cadru 153/2017		
Nr Crt.	Denumirea functiei	Grad profesional	Studii	Grad	Post	Observatii
4	Sef sectie		S	II	1.0	
5	Medic	Primar	S		1.0	
6	Medic	Primar	S		1.0	
7	Medic	Specialist	S		1.0	Susp. Temporar
8	Medic	Specialist	S		1.0	Vacant
9	Asistent sef	Principal	PL		1.0	
10	Asistent medical	Principal	PL		1.0	
11	Asistent medical	Principal	PL		1.0	
12	Asistent medical	Principal	PL		1.0	
13	Asistent medical	Principal	PL		1.0	

14	Asistent medical	Principal	PL		1.0	
15	Asistent medical		PL		1.0	Susp. Temporar
16	Asistent medical	Principal	PL		1.0	
17	Asistent medical	Principal	PL		1.0	Susp. Temporar
18	Asistent medical	Principal	PL		1.0	
19	Asistent medical	Principal	PL		1.0	Susp. Temporar
20	Asistent medical	Principal	PL		1.0	
21	Asistent medical	Principal	PL		1.0	
22	Asistent medical	Principal	S		1.0	
23	Asistent medical	Principal	PL		1.0	
24	Asistent medical	Principal	S		1.0	
25	Asistent medical		PL		1.0	Vacant
26	Infirmiera		G		1.0	
27	Infirmiera		G		1.0	
28	Infirmiera		G		1.0	
29	Infirmiera		G		1.0	
30	Infirmiera		G		1.0	
31	Infirmiera		G		1.0	
32	Infirmiera		G		1.0	
33	Ingrijitoare		G		1.0	
34	Ingrijitoare		G		1.0	
35	Ingrijitoare		G		1.0	
36	Ingrijitoare		G		1.0	Vacant

COMPARTIMENT COPII

37	Medic	Specialist	S		1.0	Medic coord.
38	Asistent medical	Principal	PL		1.0	
39	Asistent medical	Principal	PL		1.0	
40	Asistent medical	Principal	PL		1.0	
41	Asistent medical	Principal	PL		1.0	
42	Asistent medical	Principal	PL		1.0	
43	Infirmiera		G		1.0	
44	Infirmiera		G		1.0	
45	Infirmiera		G		1.0	
46	Infirmiera		G		1.0	
47	Infirmiera		G		1.0	

Total SECTIA PNEUMOLOGIE I (64 PATURI)

44.0

SECTIA PNEUMOLOGIE II (64 PATURI)

Lege-Cadru 153/2017

Nr Crt.	Denumirea functiei	Grad profesional	Studii	Grad	Post	Observatii
48	Sef sectie		S	II	1.0	
49	Medic	Specialist	S		1.0	Medic coord. ambulatoriu
50	Medic	Specialist	S		1.0	
51	Medic	Primar	S		1.0	
52	Medic	Primar	S		1.0	Medic coord. Sectie Covid
53	Asistent sef	Principal	PL		1.0	
54	Asistent medical	Principal	S		1.0	
55	Asistent medical	Principal	S		1.0	
56	Asistent medical	Principal	PL		1.0	
57	Asistent medical		PL		1.0	Susp. Temporar
58	Asistent medical	Principal	PL		1.0	
59	Asistent medical	Principal	S		1.0	
60	Asistent medical	Principal	PL		1.0	
61	Asistent medical	Principal	PL		1.0	
62	Asistent medical	Principal	PL		1.0	Asistent coord. Sectie Covid
63	Asistent medical	Principal	PL		1.0	
64	Asistent medical	Principal	PL		1.0	
65	Asistent medical	Principal	PL		1.0	
66	Asistent medical	Principal	PL		1.0	
67	Asistent medical	Principal	PL		1.0	
68	Asistent medical	Principal	PL		1.0	
69	Asistent medical	Principal	PL		1.0	
70	Asistent medical		PL		1.0	
71	Asistent medical		PL		1.0	
72	Asistent medical		PL		1.0	Vacant
73	Infirmiera		G		1.0	
74	Infirmiera		G		1.0	
75	Infirmiera		G		1.0	
76	Infirmiera		G		1.0	
77	Infirmiera		G		1.0	
78	Infirmiera		G		1.0	
79	Infirmiera		G		1.0	
80	Infirmiera		G		1.0	
81	Infirmiera		G		1.0	
82	Infirmiera		G		1.0	
83	Ingrijitoare		G		1.0	
84	Ingrijitoare		G		1.0	
85	Ingrijitoare		G		1.0	
86	Ingrijitoare		G		1.0	Vacant

Total SECTIA PNEUMOLOGIE II (64 PATURI)**39.0**

COMPARTIMENT DE DIETETICA, PREPARARE SI DISTRIBUIRE A HRANEI

Nr Crt.	Denumirea functiei	Grad profesional	Studii	Grad	Post	Observatii
87	Asistent medical	Principal	PL		1.0	Asistent coord.
88	Infirmiera		G		1.0	
89	Infirmiera		G		1.0	
90	Infirmiera		G		1.0	
91	Infirmiera		G		1.0	Vacant
92	Infirmiera		G		1.0	Vacant
93	Infirmiera		G		1.0	
94	Muncitor calificat	II	G		1.0	Vacant
95	Muncitor calificat	I	G		1.0	
96	Muncitor calificat	III	G		1.0	
97	Ingrijitoare		G		1.0	
98	Ingrijitoare		G		1.0	Vacant

Total COMPARTIMENT DE DIETETICA, PREPARARE SI DISTRIBUIRE A HRANEI 12.0

CAMERA DE GARDA

**Lege-Cadru
153/2017**

Nr Crt.	Denumirea functiei	Grad profesional	Studii	Grad	Post	Observatii
99	Asistent medical		PL		1.0	
100	Asistent medical	Principal	PL		1.0	

Total CAMERA DE GARDA 2.0

LABORATOR RADIOLOGIE SI IMAGISTICA MEDICALA

**Lege-Cadru
153/2017**

Nr Crt.	Denumirea functiei	Grad profesional	Studii	Grad	Post	Observatii
101	Medic	Primar	S		1.0	Medic coord.
102	Asistent medical	Principal	S		1.0	Asistent coord.
103	Asistent medical	Principal	PL		1.0	
104	Asistent medical	Principal	PL		1.0	
105	Asistent medical	Principal	PL		1.0	
106	Asistent medical	Principal	PL		0.5	Vacant
107	Asistent medical		PL		0.5	Vacant

Total LABORATOR RADIOLOGIE SI IMAGISTICA MEDICALA 6.0

FARMACIE**Lege-Cadru
153/2017**

Nr Crt.	Denumirea functiei	Grad profesional	Studii	Grad	Post	Observatii
108	Farmacist sef	Specialist	S		1.0	
109	Asistent medical	Principal	PL		1.0	
110	Asistent medical	Principal	PL		1.0	

Total FARMACIE**3.0****LABORATOR ANALIZE MEDICALE****Lege-Cadru
153/2017**

Nr Crt.	Denumirea functiei	Grad profesional	Studii	Grad	Post	Observatii
111	Sef laborator		S		1.0	Susp. temporar
112	Biolog	Specialist	S		1.0	
113	Biolog	Specialist	S		1.0	
114	Asistent medical	Principal	PL		1.0	
115	Asistent medical	Principal	PL		1.0	
116	Registrator medical		M		1.0	
117	Asistent medical	Principal	PL		1.0	
118	Registrator medical		M		1.0	
119	Ingrijitoare		G		1.0	

COMPARTIMENT BK

120	Biolog	Principal	S		1.0	Biolog coord.
121	Asistent medical	Debutant			1.0	Vacant
122	Asistent medical	Principal	PL		1.0	
123	Asistent medical		PL		1.0	
124	Ingrijitoare		G		1.0	

Total LABORATOR ANALIZE MEDICALE**14.0****COMPARTIMENT STATISTICA SI PRELUCRARI DATE****Lege-Cadru
153/2017**

Nr Crt.	Denumirea functiei	Grad profesional	Studii	Grad	Post	Observatii
125	Asistent medical	Principal	PL		1.0	Asistent coord.
126	Asistent medical	Principal	PL		1.0	
127	Informatician	I	S		1.0	
128	Economist	IA	S		1.0	

Total COMPARTIMENT STATISTICA SI PRELUCRARI DATE**4.0**

SERVICIUL DE MANAGEMENT AL CALITATII SERVICIILOR DE SANATATE

Nr Crt.	Denumirea functiei	Grad profesional	Studii	Grad	Post	Observatii
129	Sef serviciu		S	II	1.0	
130	Referent de specialitate	IA	S		1.0	
131	Economist	IA	S		1.0	Susp. temporar
132	Medic	Primar	S		1.0	Vacant

COMPARTIMENT CPIAAM

Nr Crt.	Denumirea functiei	Grad profesional	Studii	Grad	Post	Observatii
133	Medic	Specialist	S		1.0	Susp. temporar
134	Asistent medical		PL		1.0	
135	Asistent medical	Debutant	PL		1.0	Vacant

Total SERVICIUL DE MANAGEMENT AL CALITATII SERVICIILOR DE SANATA	7.0
---	------------

COMPARTIMENT INTERNARI

Lege-Cadru 153/2017

Nr Crt.	Denumirea functiei	Grad profesional	Studii	Grad	Post	Observatii
136	Registrator medical		M		1.0	
137	Registrator medical		M		1.0	
138	Registrator medical		M		1.0	

Total COMPARTIMENT INTERNARI	3.0
-------------------------------------	------------

TOTAL SPITAL	137
---------------------	------------

AMBULATORIU INTEGRAT DISPENSAR TBC

DISPENSAR TBC BRAILA

Nr Crt.	Denumirea functiei	Grad profesional	Studii	Lege-Cadru 153/2017		Observatii
				Grad	Post	
139	Asistent medical	Principal	PL		1.0	Asistent coord.
140	Asistent medical	Principal	PL		1.0	
141	Asistent medical	Principal	PL		1.0	
142	Asistent medical	Principal	PL		1.0	
143	Asistent medical	Principal	PL		1.0	
144	Asistent medical	Principal	PL		1.0	
145	Asistent medical	Principal	PL		1.0	
146	Asistent medical	Principal	PL		1.0	
147	Asistent medical	Principal	PL		1.0	
148	Asistent medical	Principal	PL		1.0	
149	Asistent medical	Principal	PL		1.0	
150	Asistent medical	Principal	PL		1.0	
151	Asistent medical	Principal	PL		1.0	
152	Statistician medical	Principal	M		1.0	
153	Registrator medical	Principal	M		1.0	
154	Asistent medical	Principal	PL		1.0	
155	Asistent medical	Principal	PL		1.0	
156	Asistent medical	Principal	PL		1.0	
157	Asistent medical	Principal	PL		1.0	
158	Ingrijitoare		G		1.0	
159	Ingrijitoare		G		1.0	

Total DISPENSAR TBC BRAILA

21.0

EXPLORARI FUNCTIONALE

Nr Crt.	Denumirea functiei	Grad profesional	Studii	Lege-Cadru 153/2017		Observatii
				Grad	Post	
160	Asistent medical	Principal	S		1.0	
161	Asistent medical	Principal	PL		1.0	
162	Asistent medical		PL		1.0	

Total EXPLORARI FUNCTIONALE

3.0

MEDICI REZIDENTI**Lege-Cadru
153/2017**

Nr Crt.	Denumirea functiei	Grad profesional	Studii	Grad	Post	Observatii
163	Medic rezident	Anul IV-V	S		1.0	
164	Medic rezident	Anul I	S		1.0	
165	Medic rezident	Anul II	S		1.0	
166	Medic rezident	Anul II	S		1.0	
167	Medic rezident	Anul I	S		1.0	

Total MEDICI REZIDENTI**5.0****DISPENSAR TBC FAUREI****Lege-Cadru
153/2017**

Nr Crt.	Denumirea functiei	Grad profesional	Studii	Grad	Post	Observatii
CABINET TRATAMENTE, FISIER						
168	Asistent medical	Principal	PL		1.0	
169	Ingrijitoare		G		1.0	

CABINET RECOLTARE SPUTA

170	Asistent medical	Principal	PL		1.0	
171	Registrator medical	Principal	M		1.0	

CABINET ASISTENTE DE TEREN**Total DISPENSAR TBC FAUREI****4.0****TOTAL DISPENSAR TBC****33.0****TOTAL SECTII MEDICALE****170.0****APARAT FUNCTIONAL****SERVICIUL FINANCIAR-CONTABILITATE****Lege-Cadru
153/2017**

Nr Crt.	Denumirea functiei	Grad profesional	Studii	Grad	Post	Observatii
172	Sef serviciu		S	II	1.0	
173	Economist	IA	S		1.0	Susp. temporar
174	Economist	IA	S		1.0	
175	Economist	IA	S		1.0	
176	Economist	IA	S		1.0	
177	Registrator medical		M		1.0	

Total SERVICIUL FINANCIAR-CONTABILITATE**6.0**

SERVICIU ACHIZITII PUBLICE, CONTRACTARE**Lege-Cadru
153/2017**

Nr Crt.	Denumirea functiei	Grad profesional	Studii	Grad	Post	Observatii
178	Sef serviciu		S	II	1.0	
179	Economist	IA	S		1.0	
180	Economist	Debutant	S		1.0	Vacant
181	Operator date	II	M		1.0	
182	Muncitor calificat	IV	G		1.0	
183	Muncitor calificat	I	G		1.0	

Total SERVICIU ACHIZITII PUBLICE, CONTRACTARE**6.0****SERVICIU ADMINISTRATIV, TEHNIC, TRANSPORT****Lege-Cadru
153/2017**

Nr Crt.	Denumirea functiei	Grad profesional	Studii	Grad	Post	Observatii
184	Sef serviciu		S	II	1.0	
185	Muncitor calificat	IV	G		1.0	
186	Muncitor calificat	I	G		1.0	
187	Muncitor calificat	IV	G		1.0	Vacant
188	Muncitor calificat	I	G		1.0	
189	Muncitor calificat	IV	G		1.0	
190	Muncitor calificat	IV	G		1.0	
191	Muncitor calificat	I	G		1.0	
192	Muncitor calificat	IV	G		1.0	
193	Muncitor calificat	IV	G		1.0	
194	Spalatoreasa		G		1.0	
195	Spalatoreasa		G		1.0	
196	Spalatoreasa		G		1.0	
197	Spalatoreasa		G		1.0	
198	Ingrijitoare		G		1.0	

Total SERVICIU ADMINISTRATIV, TEHNIC, TRANSPORT**15.0**

BIROU RUNOS**Lege-Cadru
153/2017**

Nr Crt.	Denumirea functiei	Grad profesional	Studii	Grad	Post	Observatii
199	Sef Birou		S	II	1.0	
200	Referent de specialitate	I	S		1.0	Vacant
201	Psiholog	Practicant	S		1.0	

Total BIROU RUNOS**3.0****COMPARTIMENT JURIDIC****Lege-Cadru
153/2017**

Nr Crt.	Denumirea functiei	Grad profesional	Studii	Grad	Post	Observatii
202	Consilier juridic	IA	S		1.0	

Total COMPARTIMENT JURIDIC**1.0****TOTAL SERVICII AUXILIARE****31.0****TOTAL GENERAL****201****Manager,**

Ec. Sîmpetru Stefan

**Intocmit,****Birou Runos,**

Sef birou Malinche Diana